



# HOOSIERS BY THE NUMBERS

Your premier source for labor market information for Indiana.

# DWD

INDIANA DEPARTMENT OF  
**WORKFORCE**  
DEVELOPMENT

## LABOR MARKET REVIEW



## December 2024 Labor Market Review

Reported by: Kathy Jaworski

Regional Workforce Analyst

[Email Kathy](#)

[kjaworski@dwd.in.gov](mailto:kjaworski@dwd.in.gov)

Tel: 219-841-6347

# DWD

INDIANA DEPARTMENT OF  
**WORKFORCE**  
DEVELOPMENT



## LABOR MARKET REVIEW

# Economic Growth Region 2

Statistical Data Report for December 2024, Released February 2025

### State Employment and Unemployment

Unemployment rates were higher in December in 6 states, lower in 2 states, and stable in 42 states and the District of Columbia, the U.S. Bureau of Labor Statistics reported. Twenty-seven states and the District had jobless rate increases from a year earlier, 6 states had decreases, and 17 states had little change. South Dakota had the lowest jobless rate in December, 1.9 percent. Nevada had the highest unemployment rate, 5.7 percent, followed by California and the District of Columbia, 5.5 percent each.

The national unemployment rate changed little over the month at 4.1 percent but was 0.3 percentage point higher than in December 2023.

Nonfarm payroll employment increased in 2 states and was essentially unchanged in 48 states and the District in December 2024. Job gains occurred in Texas (+37,500, or +0.3 percent) and Missouri (+11,200, or +0.4 percent).

Over the year, nonfarm payroll employment increased in 33 states and was essentially unchanged in 17 states and the District. . The largest job gains occurred in Texas (+284,200), California (+180,500), and Florida (+147,900). The largest percentage increase occurred in Idaho (+3.6 percent), followed by Missouri and South Carolina (+2.8 percent each).



### Economic Growth Region (EGR) 2

Elkhart, Fulton, Kosciusko, Marshall and St. Joseph Counties

### Unemployment Rates by State (seasonally adjusted): December 2024

U.S. - 4.1%

Illinois - 5.2%

Indiana - 4.5%

Kentucky - 5.2%

Michigan - 5%

Ohio - 4.4%

Source: U.S. Department of Labor, Bureau of Labor Statistics

### Unemployment Rank by County (of 92 counties): December 2024

#14 - Fulton (4.6%)

#27 - St. Joseph (4.5%)

#31 - Kosciusko (4.2%)

#36 - Elkhart (4%)

#55 - Marshall (3.7%)

Source: Indiana Department of Workforce Development, Research and Development, Local Area Unemployment Statistics

December 2024 Labor Force Estimates (not seasonally adjusted)						
Area	Labor Force	Employed	Unemployed	Dec-24	Nov-24	Dec-23
U.S.	167,746,000	161,294,000	6,452,000	3.8%	4.0%	3.5%
IN	3,439,659	3,301,061	138,598	4.0%	4.2%	2.9%
EGR 2	313,714	300,497	13,217	4.2%	4.5%	3.2%
Elkhart-Goshen MSA	107,625	103,356	4,269	4.0%	4.3%	3.3%
South Bend-Mishawaka MSA	158,115	150,849	7,266	4.6%	4.7%	3.4%
Elkhart Co.	107,625	103,356	4,269	4.0%	4.3%	3.3%
Fulton Co.	9,511	9,072	439	4.6%	4.7%	3.4%
Kosciusko Co.	39,685	38,002	1,683	4.2%	4.5%	2.9%
Marshall Co.	23,602	22,722	880	3.7%	4.0%	2.6%
St Joseph Co.	133,291	127,345	5,946	4.5%	4.7%	3.3%
Elkhart	25,013	23,774	1,239	5.0%	5.3%	4.8%
Goshen	17,103	16,422	681	4.0%	4.3%	3.2%
Mishawaka	26,169	25,006	1,163	4.4%	4.8%	3.4%
Plymouth	4,484	4,269	215	4.8%	4.8%	3.0%
South Bend	47,015	44,587	2,428	5.2%	5.3%	4.0%
Warsaw	7,470	7,122	348	4.7%	4.8%	3.2%

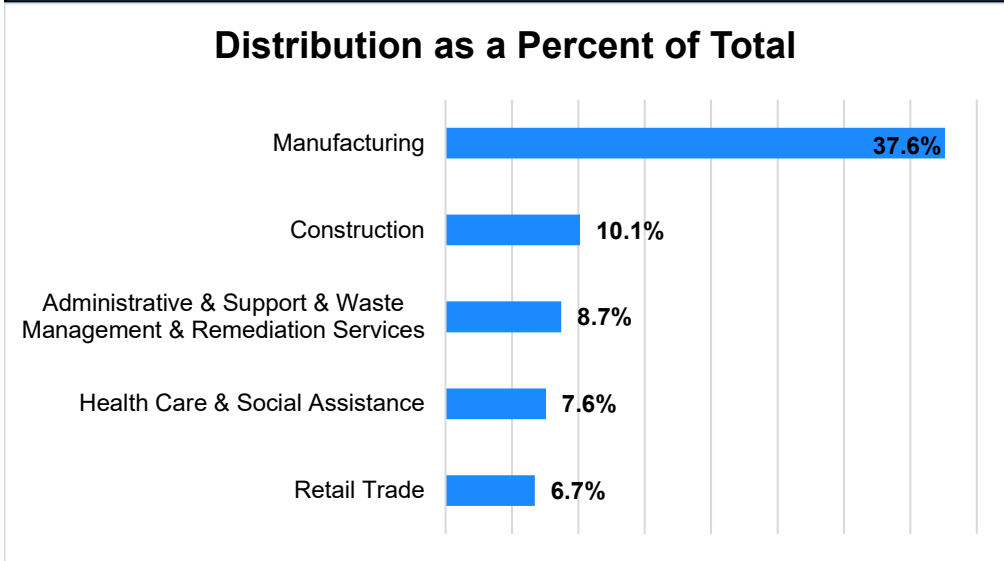
Source: Indiana Department of Workforce Development, Research & Analysis, Local Area Unemployment Statistics | Unemployment Statistics Released:01/25 | Notes: The data displayed are presented as estimates only. The most recent month's data are always preliminary and are revised when the next month's data are released.

Consumer Price Index (CPI-U Change), Unadjusted Percent Change to December 2024 from				
CPI Item	Dec-23	Nov-24	Dec-23	Nov-24
	U.S. City		Midwest Region*	
<b>All Items</b>	<b>2.9%</b>	<b>0.0%</b>	<b>3.0%</b>	<b>0.2%</b>
Food & Beverages	2.4%	0.2%	2.0%	-0.2%
Housing	4.1%	0.2%	4.9%	0.4%
Apparel	1.2%	-1.7%	1.3%	-2.5%
Transportation	1.6%	-0.3%	1.4%	0.3%
Medical Care	2.8%	0.1%	2.3%	0.2%
Recreation	1.1%	0.0%	1.3%	0.1%
Education & Communication	0.6%	-0.1%	-0.2%	0.1%
Other Goods & Services	3.3%	-0.4%	5.0%	-0.4%

\*Midwest region = Midwest Urban Average. Midwest Region includes Illinois, Indiana, Iowa, Kansas, Michigan, Minnesota, Missouri, Nebraska, North Dakota, Ohio, South Dakota and Wisconsin | Source: U.S. Bureau of Labor Statistics

### Percentage of Unemployment Claims for Top 5 Region 2 Industries December 2024

#### Distribution as a Percent of Total



Source: Indiana Department of Workforce Development, Research and Analysis

### WARN Notices

WARN Notices for Region 2 for December 2024				
Company	City	County	# affected	Notice Date

**There are no WARN Notices for December 2024 for Region 2.**

Source: Indiana Department of Workforce Development, WARN Notices | For information on WARN Act requirements, you may go to the U.S. Department of Labor Employment Training Administration Fact Sheet:

<https://www.doleta.gov/programs/factsht/warn.htm>

### Unemployment Claims: December 2024

#### Region 2

**Initial Claims**  
 12/07/24 - 1,124  
 12/14/24 - 361  
 12/21/24 - 367  
 12/28/24 - 515

**Continued Claims**  
 12/07/24 - 1,913  
 12/14/24 - 1,936  
 12/21/24 - 2,230  
 12/28/24 - 2,403

**Total Claims**  
 12/07/24 - 3,037  
 12/14/24 - 2,297  
 12/21/24 - 2,597  
 12/28/24 - 2,918

#### State of Indiana

**Initial Claims**  
 12/07/24 - 5,319  
 12/14/24 - 3,846  
 12/21/24 - 3,726  
 12/28/24 - 3,675

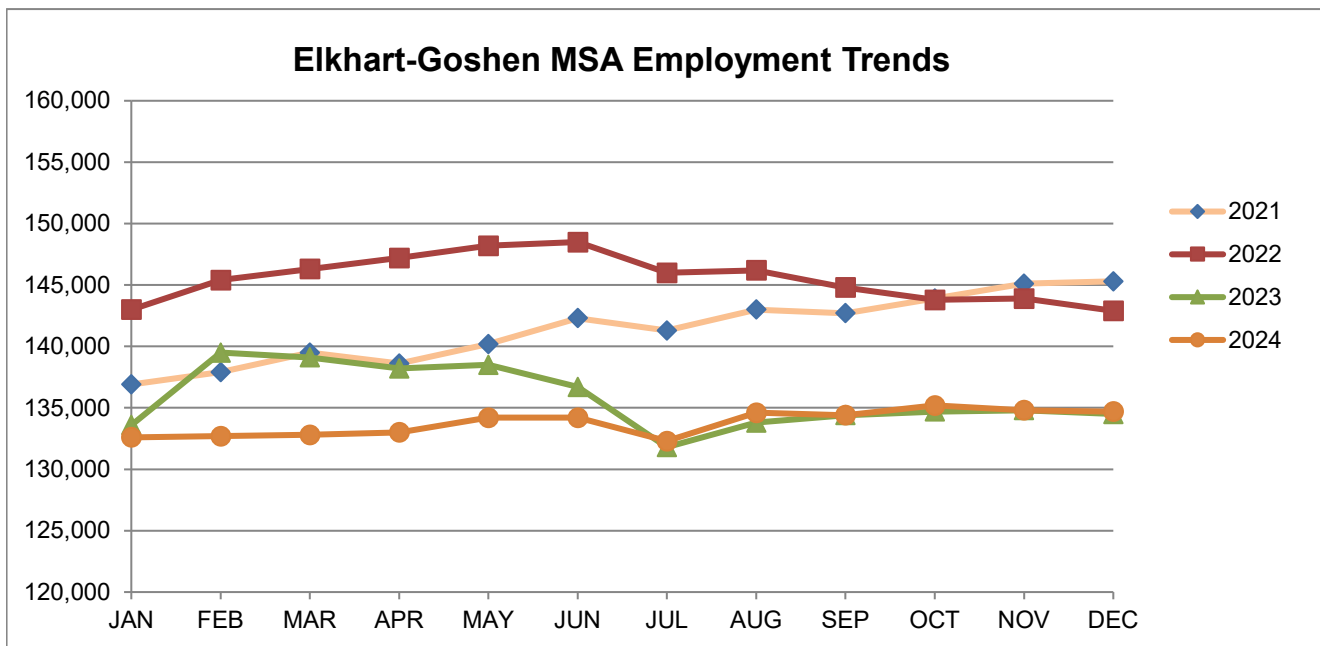
**Continued Claims**  
 12/07/24 - 23,610  
 12/14/24 - 24,094  
 12/21/24 - 24,631  
 12/28/24 - 28,033

**Total Claims**  
 12/07/24 - 28,929  
 12/14/24 - 27,940  
 12/21/24 - 28,357  
 12/28/24 - 31,708

Notes: (D) Indicates one or more counties are excluded due to non-disclosure issues | Numbers subject to weekly revision | Source: Indiana Department of Workforce Development, Research and Analysis

Elkhart-Goshen MSA							
Wage and Salaried Employment	December 2024			# Change	% Change	# Change	% Change
Industry	Dec-24	Nov-24	Dec-23	Nov-24 to Dec-24	Dec-23 to Dec-24	Nov-24 to Dec-24	Dec-23 to Dec-24
<b>Total Nonfarm</b>	<b>134,700</b>	<b>134,800</b>	<b>134,500</b>	<b>-100</b>	<b>-0.1%</b>	<b>200</b>	<b>0.2%</b>
<b>Total Private</b>	<b>125,600</b>	<b>125,800</b>	<b>126,000</b>	<b>-200</b>	<b>-0.2%</b>	<b>-400</b>	<b>-0.3%</b>
Goods Producing	66,600	66,700	67,700	-100	-0.2%	-1,100	-1.6%
Service-Providing	68,100	68,100	66,800	0	0.0%	1,300	2.0%
Private Service Providing	59,000	59,100	58,300	-100	-0.2%	700	1.2%
Mining, Logging and Construction	4,600	4,700	4,400	-100	-2.1%	200	4.6%
Manufacturing	62,000	62,000	63,300	0	0.0%	-1,300	-2.1%
Durable Goods	52,000	52,000	54,000	0	0.0%	-2,000	-3.7%
Transportation Equipment Manufacturing	33,300	33,300	34,700	0	0.0%	-1,400	-4.0%
Motor Vehicle Body and Trailer Manufacturing	28,300	28,200	29,500	100	0.4%	-1,200	-4.1%
Trade, Transportation, and Utilities	21,400	21,300	21,500	100	0.5%	-100	-0.5%
Wholesale Trade	8,100	8,100	8,000	0	0.0%	100	1.3%
Retail Trade	10,300	10,200	10,400	100	1.0%	-100	-1.0%
Transportation, Warehousing, and Utilities	3,000	3,000	3,100	0	0.0%	-100	-3.2%
Information	500	500	500	0	0.0%	0	0.0%
Financial Activities	2,900	2,900	2,900	0	0.0%	0	0.0%
Professional and Business Services	10,200	10,200	9,900	0	0.0%	300	3.0%
Education and Health Services	12,300	12,400	12,100	-100	-0.8%	200	1.7%
Leisure and Hospitality	7,500	7,500	7,300	0	0.0%	200	2.7%
Other Services	4,200	4,300	4,100	-100	-2.3%	100	2.4%
<b>Government</b>	<b>9,100</b>	<b>9,000</b>	<b>8,500</b>	<b>100</b>	<b>1.1%</b>	<b>600</b>	<b>7.1%</b>
Federal Government	300	300	300	0	0.0%	0	0.0%
State Government	200	200	200	0	0.0%	0	0.0%
Local Government	8,600	8,500	8,000	100	1.2%	600	7.5%
Local Government Educational Services	5,600	5,500	5,300	100	1.8%	300	5.7%

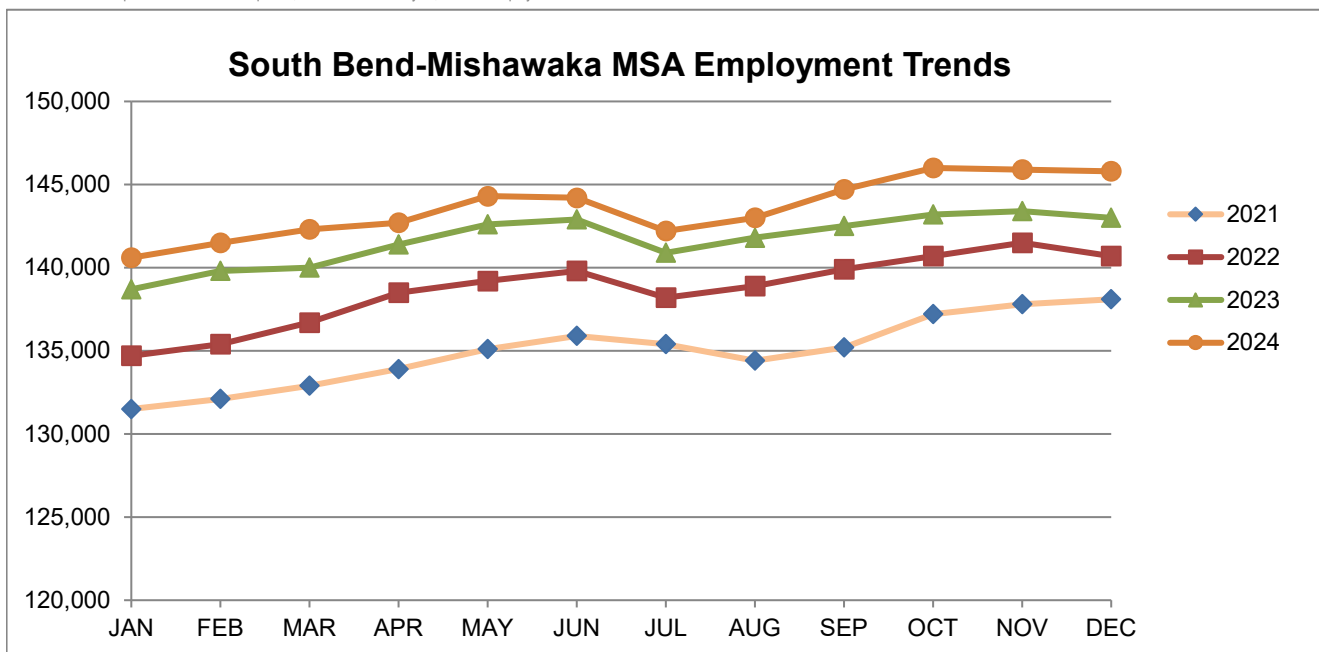
Source: Indiana Dept of Workforce Development, Research and Analysis, Current Employment Statistics



Source: Indiana Department of Workforce Development, Research & Analysis, Current Employment Statistics | Note: Historical data for the most recent 4 years (both seasonally adjusted and not seasonally adjusted) are revised near the beginning of each calendar year, prior to the release of January estimates for statewide data.

South Bend-Mishawaka MSA							
Wage and Salaried Employment	December 2024			# Change	% Change	# Change	% Change
Industry	Dec-24	Nov-24	Dec-23	Nov-24 to Dec-24	Dec-23 to Dec-24	Dec-23 to Dec-24	Dec-23 to Dec-24
<b>Total Nonfarm</b>	<b>145,800</b>	<b>145,900</b>	<b>143,000</b>	<b>-100</b>	<b>-0.1%</b>	<b>2,800</b>	<b>2.0%</b>
<b>Total Private</b>	<b>130,200</b>	<b>130,100</b>	<b>128,100</b>	<b>100</b>	<b>0.1%</b>	<b>2,100</b>	<b>1.6%</b>
Goods Producing	21,800	21,900	21,300	-100	-0.5%	500	2.4%
Service Providing	124,000	124,000	121,700	0	0.0%	2,300	1.9%
Private Service Providing	108,400	108,200	106,800	200	0.2%	1,600	1.5%
Mining, Logging and Construction	6,600	6,700	6,100	-100	-1.5%	500	8.2%
Manufacturing	15,200	15,200	15,200	0	0.0%	0	0.0%
Trade, Transportation and Utilities	27,000	26,900	26,900	100	0.4%	100	0.4%
Wholesale Trade	7,400	7,400	7,200	0	0.0%	200	2.8%
Retail Trade	15,000	14,800	14,900	200	1.4%	100	0.7%
General Merchandise Stores	3,800	3,700	3,700	100	2.7%	100	2.7%
Transportation, Warehousing and Utilities	4,600	4,700	4,800	-100	-2.1%	-200	-4.2%
Information	1,400	1,400	1,400	0	0.0%	0	0.0%
Financial Activities	5,800	5,800	5,700	0	0.0%	100	1.8%
Professional & Business Services	13,100	13,000	12,800	100	0.8%	300	2.3%
Educational & Health Services	38,500	38,400	38,000	100	0.3%	500	1.3%
Hospitals	7,700	7,600	7,500	100	1.3%	200	2.7%
Leisure & Hospitality	16,200	16,300	15,700	-100	-0.6%	500	3.2%
Food Services and Drinking Places	12,000	12,000	11,500	0	0.0%	500	4.4%
Other Services	6,400	6,400	6,300	0	0.0%	100	1.6%
<b>Total Government</b>	<b>15,600</b>	<b>15,800</b>	<b>14,900</b>	<b>-200</b>	<b>-1.3%</b>	<b>700</b>	<b>4.7%</b>
Federal Government	900	900	900	0	0.0%	0	0.0%
State Government	2,700	2,800	2,500	-100	-3.6%	200	8.0%
Local Government	12,000	12,100	11,500	-100	-0.8%	500	4.4%
Local Government Educational Services	6,700	6,600	6,400	100	1.5%	300	4.7%

Source: Indiana Dept of Workforce Development, Research and Analysis, Current Employment Statistics



Source: Indiana Department of Workforce Development, Research & Analysis, Current Employment Statistics | Note: Historical data for the most recent 4 years (both seasonally adjusted and not seasonally adjusted) are revised near the beginning of each calendar year, prior to the release of January estimates for statewide data.

Frequently Listed Jobs	
Top 20 job listings by number of openings in Region 2 in the past month	
Rank	Occupations
1	Landscaping and Groundskeeping Workers
2	Farmworkers and Laborers, Crop, Nursery, and Greenhouse
3	Maintenance and Repair Workers, General
4	First-Line Supervisors of Production and Operating Workers
5	Registered Nurses
6	Quality Control Analysts
7	Nursing Assistants
8	Maids and Housekeeping Cleaners
9	Production Workers, All Other
10	Cooks, Restaurant
11	Agricultural Equipment Operators
12	Customer Service Representatives
13	Business Operations Specialists, All Other
14	Shipping, Receiving, and Inventory Clerks
15	Licensed Practical and Licensed Vocational Nurses
16	Managers, All Other
17	Educational, Guidance, and Career Counselors and Advisors
18	Occupational Therapists
19	Clinical Nurse Specialists
20	Laborers and Freight, Stock, and Material Movers, Hand

Source: Indiana Workforce Development, Indiana Career Connect

Applicant Pool	
Top 20 occupations desired by applicants on their resumes in the past 12 months	
Occupations	# of applicants
Production Workers, All Other	2,172
Assemblers and Fabricators, All Other	1,366
Helpers--Production Workers	1,026
Laborers and Freight, Stock, and Material Movers, Hand	520
Customer Service Representatives	513
Cashiers	435
Office Clerks, General	374
First-Line Supervisors of Production and Operating Workers	327
Shipping, Receiving, and Traffic Clerks	321
Team Assemblers	313
Welders, Cutters, Solderers, and Brazers	287
Heavy and Tractor-Trailer Truck Drivers	274
Industrial Truck and Tractor Operators	269
Office and Administrative Support Workers, All Other	264
Inspectors, Testers, Sorters, Samplers, and Weighers	249
Packers and Packagers, Hand	246
Retail Salespersons	233
Managers, All Other	230
Receptionists and Information Clerks	196
Carpenters	179

\* Due to an upgrade in the reporting system, there is a notable change in Job Postings recorded. The tool used to measure Job Postings was upgraded to prevent malicious or false postings. While customers adjust to the enhancements a drop in the record is to be expected.

Source: Indiana Workforce Development, Indiana Career Connect

Statewide Average Weekly Hours & Earnings by Industry for December 2024			
Industry	Average Earnings (per hour)	Average # of hours worked (weekly)	Average Earnings (per week)
Construction	\$34.06	39.7	\$1,352.18
Manufacturing	\$26.20	42.5	\$1,113.50
Durable Goods	\$27.16	44.4	\$1,205.90
Fabricated Metal Product Manufacturing	\$26.02	43.3	\$1,126.67
Transportation Equipment Manufacturing	\$29.65	44.4	\$1,316.46
Non-Durable Goods	\$23.41	37.9	\$887.24
Retail Trade	\$18.78	29.8	\$559.64
Financial Activities	\$29.71	37.6	\$1,117.10
Health Care and Social Assistance	\$31.46	33.1	\$1,041.33
Accommodation and Food Services	\$16.35	23.3	\$380.96
Food Services and Drinking Places	\$15.92	22.7	\$361.38

Source: Indiana Department of Workforce Development, Current Employment Statistics

SNAPSHOT

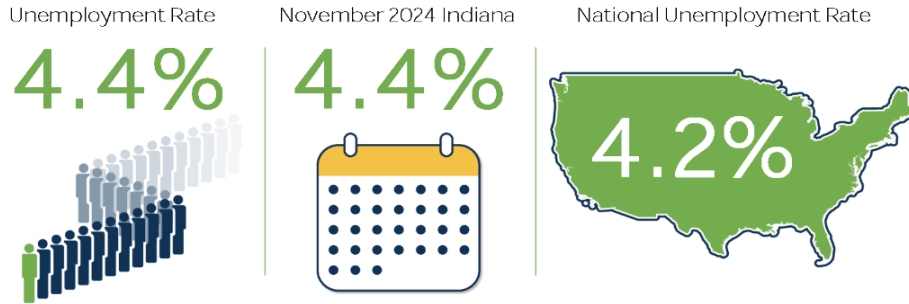
## November Indiana Employment

Released December 20, 2024

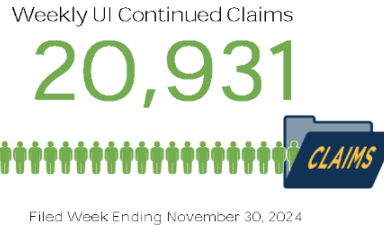


### Unemployment Rate

\*seasonally adjusted



### LABOR FORCE PARTICIPATION RATE\*



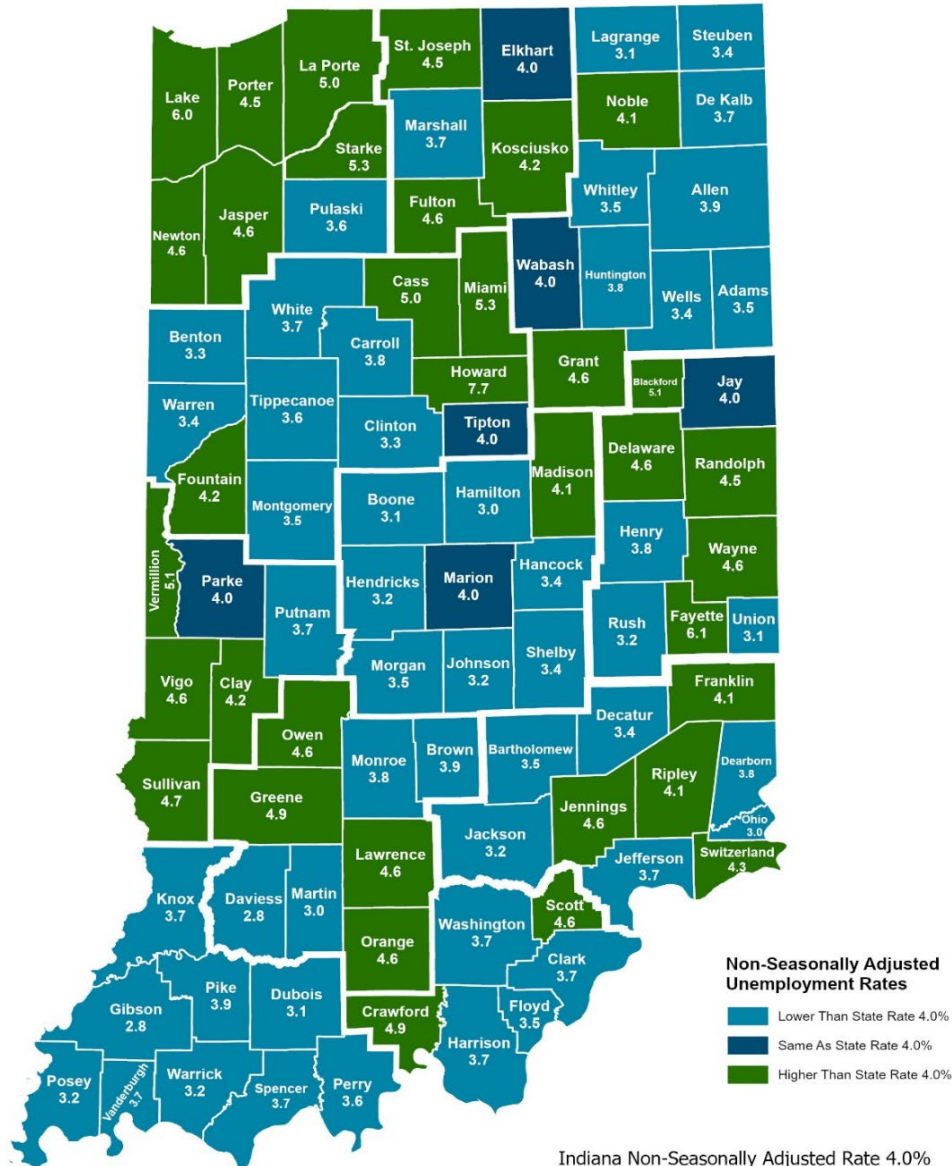
Source: Local Area Unemployment Statistics, Bureau of Labor Statistics, Indiana Career Connect

\* The percentage of Hoosiers 16 and older who are either working or actively looking for work. Those not in the labor force include primarily: students, retirees and other non-working populations, such as individuals unable to work due to a disability or illness, or adults responsible for their family's childcare needs.



INDIANA DEPARTMENT OF  
**WORKFORCE**  
DEVELOPMENT

## County Unemployment Rates December 2024



### Non-Seasonally Adjusted Unemployment Rates

- Lower Than State Rate 4.0%
- Same As State Rate 4.0%
- Higher Than State Rate 4.0%

Indiana Non-Seasonally Adjusted Rate 4.0%  
Indiana Seasonally Adjusted Rate 4.5%  
Source: DWD, Local Area Unemployment Statistics

### Questions?

Please contact the DWD  
Research and Analysis  
Regional Labor Analyst  
listed below:

Kathy Jaworski

Regional Labor Analyst  
Research and Analysis

[Indiana Department of  
Workforce Development](https://www.in.gov/dwd/)

219-841-6347

[kjaworski@dwd.in.gov](mailto:kjaworski@dwd.in.gov)