



MOVING FORWARD.

Whether you are looking for a new job, to improve your job qualifications, explore a new career, or hire a new employee, WorkOne Northern Indiana can help!

Connect with us at <https://www.gotoworkone.com/home>

TABLE of CONTENTS

WorkOne Northern Indiana Magazine



Services are described on pages 3-7.
WorkOne offers free job seeker services. Whether you are looking for a new job, considering a career change, or need to develop a career plan, our staff can assist you!



Programs are described on pages 8-14.
Training programs for job seekers interested in paid training, paid internships, & one-on-one interviews with employers are some of the programs we offer. Do you need a career certificate or a high school equivalency diploma? We can help!



Workshop Calendar is on page 15.
We offer in person workshops with instruction for registration. Workshops last 45-60 minutes and include topics such as Using ICC, Job Searching Techniques, etc.



Office Locations & Hours are on the back.
WorkOne centers provide access to development services for customers & employers in each county.



USDOL-ETA Funding Acknowledgement and Product Disclaimer

This workforce product was funded by a grant awarded by the U.S. Department of Labor's Employment and Training Administration. The product was created by the recipient and does not necessarily reflect the official position of the U.S. Department of Labor. The Department of Labor makes no guarantees, warranties, or assurances of any kind, express or implied, with respect to such information including any information on linked sites and including, but not limited to, accuracy of the information or its completeness, timeliness, usefulness, adequacy, continued availability, or ownership.

This product is copyrighted by the institution that created it.

WorkOne Customer Services



ADULT SERVICES

For adults, we offer workshops on topics such as career interest, job searches, interviews, resumes, and work readiness. Ask about our paid training, on-the-job training, certification opportunities, career counseling and employment specialists who can help you plan your next career move.



DISLOCATED WORKER SERVICES

If you have lost your job as a result of layoff, downsizing, or plant closure, take advantage of our re-employment services as well as all of the Adult Services including workshops and career counseling. Visit a WorkOne office near you and ask to speak with an employment specialist about your next job.



VETERAN SERVICES

Thank you for your service, veterans! WorkOne is committed to providing veterans with priority service in transitioning from a military to civilian workforce. Veterans' Specialists provide employment services to eligible veterans and eligible spouses with significant barriers to employment.



YOUTH SERVICES

Are you between the ages of 16 and 24? WorkOne Youth Services can help you get the education and training to succeed! Career Coaches and The Young Adult Services Program work with you to develop career goals, on-the-job training, internships, and mentoring opportunities.

The WorkOne System is an equal opportunity employer and does not discriminate in the programs and services offered. Auxiliary aids and services are available upon request to individuals with disabilities. The TDD/TTY number is 1-800-743-3333. El Programa de Financiamiento asistido de acuerdo con el Título 1 de WIA es un programa de Igualdad de Oportunidades de Empleo. Ayuda y servicios auxiliares están disponibles a solicitud para personas con discapacidad. El numero de TDD/TTY es 1-800-743-3333.

Facts About WorkOne Services



FIND A JOB NOW

Come see us. Visit a WorkOne office. Get help job searching. Register for a workshop. Talk to an employment specialist for the best guidance moving your career forward today.



<https://gotoworkone.com/home>

TRAINING & EDUCATION



Need an HSE diploma or a career certificate? We can help. Are you interested in On-The-Job Training? Ask our staff about training opportunities.

<https://gotoworkone.com/home>

UNEMPLOYMENT BENEFITS

If you are unemployed due to no fault of your own, you may be eligible for unemployment benefit insurance. To file a claim, call 1-800-891-6499.

<https://www.in.gov/dwd/indiana-unemployment/file/>



SKILLS WORKSHOPS



WorkOne workshops take 30-45 minutes and give you the latest information and tools. Trained facilitators give you the best advice to achieve your career goal.

<https://gotoworkone.com/home>

WorkOne System is an equal opportunity employer and does not discriminate in the programs and services offered. Auxiliary aids and services are available upon request to individuals with disabilities. The TDD/TTY program number is de Igualdad 1-800-743-3333. El Programa de Financiamiento asistido de acuerdo con el Título disponibles 1 de aWIA es solicitud un para de personas con Oportunidades discapacitadas de Empleo. El . numero Ayuda y de TDD servicios/TTY es auxiliares están 1-800-743-3333.



ADDITIONAL SERVICES and INFORMATION:

Unemployment



To file an Unemployment Insurance Claim:
<https://uplink.in.gov/CSS/CSSLogon.htm>
and create an Uplink account.

For Unemployment Help, call the
Unemployment Customer Service
Center: 800-891-6499.



**To learn more about this exciting
opportunity, contact an IMPACT case
worker or call:
800-403-0864, and choose Option 3.
*Now Offering Child Care Support Services!***



SNAP Benefits

Supplemental Nutritional Assistance
Program (SNAP) Go to:
in.gov/fssa/dfr/2691.htm
*Provides food assistance to low- and
no-income individuals and families.*



Vocational Rehabilitation

VR Services provide quality individualized
services to enhance & support people with
disabilities to prepare for, obtain,
or retain employment.
Call: 800-545-7763 Go to: <http://vrs.in.gov>



Proteus provides services & financial
assistance to help migrant & seasonal farm
workers qualify for better jobs & achieve a
better standard of living.
Call: 855-765-6687
Go to: www.proteusinc.net

Trade Adjustment Assistance (TAA)



TAA seeks to provide U.S. Workers who
are adversely affected by trade with the
opportunity to obtain skills, resources,
and support to become reemployed.
<https://www.in.gov/dwd/taa>.



Indiana Adult Education programs provide math, reading, and writing
education instruction at no cost to help you attain the skills
needed to earn a high school equivalency diploma.
Go to: <https://www.in.gov/dwd/career-training-adult-ed/adult-ed/>.

Connect with us at <https://www.gotoworkone.com/home>



Region 2 Adult Education Information

Scan QR Codes for More Information!

WorkOne (Elkhart Office)



Elkhart Community Schools Adult Education



Elkhart Area Career Center



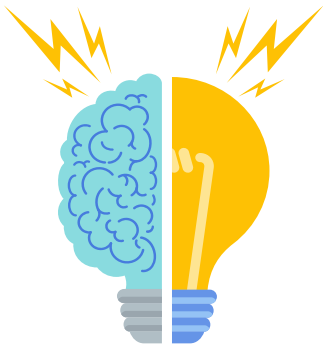
Gateway Education Center (Warsaw Comm. Schools)



Warsaw Area Career Center



Horizon Education Alliance



South Bend Community Schools Adult Education



Career Academy South Bend



South Bend Comm. Schools Corp. Career & Technical Education



Marshall County Adult Education (Plymouth Comm. Schools)



North Central CTE Cooperative



Pathways Wawasee Area Career & Technical Education Cooperative



Top Demand Occupations



Occupations listed are growing in-demand careers in Northern Indiana. These are careers that can be supported with funding to ensure skill development that matches the workforce needs of businesses and employers throughout Region 2.

Accountant and Auditor
Administrative Services Manager
Agricultural and Food Science Technician
Architectural and Engineering Manager
Assembler & Fabricator
Automotive Service Technician/Mechanic
Bookkeeping, Accounting, and Auditing Clerk
Bus and Truck Mechanics and Diesel Engine Specialist
Carpenter
Chemical Equipment Operator and Tender
Clinical Laboratory Technologist
Computer and Information Systems Manager
Computer Numerically Controlled Operator/Programmer (CNC)
Computer Software Developer
Computer Systems Analyst
Construction Laborer
Construction Manager
Correctional Officer
Counselor
Customer Service Representative
Dental Assistant
Dental Hygienist
Education Administrator
Educational, Vocational, and School Counselor
Electrical and Electronic Engineering Technician
Electrician
Electronics Engineer, Except Computer
Elementary, Middle School and Secondary School Teacher
Emergency Paramedic, EMT
Executive Secretary and Administrative Assistant
Financial Manager
First-line Supervisor/Manager of Construction Trades & Extraction Workers
First-line Supervisor/Manager of Mechanics, Installers, & Repairers
First-line Supervisor/Manager of Office and Administrative Support Workers

First-line Supervisor/Manager of Office and Administrative Support Workers
First-line Supervisor/Manager of Production & Operating Workers
First-line Supervisor/Manager of Retail Sales Workers
First-line Supervisor/Manager of Transportation & Material-Moving Machine and Vehicle Operators
General and Operations Manager
General Office Occupation
Heating, Air Conditioning, and Refrigeration Mechanic and Installer
Home Health Aide
Human Resources Specialist
Industrial Engineering Technologist and Technician Industrial Engineer
Industrial Production Manager
Industrial Machinery Repairer/Maintenance Industrial Truck and Tractor Operator
Inspector, Tester, Sorter, Sampler, and Weigher
Laborer and Freight, Stock, and Material Mover, Hand
Licensed Practical Nurse (LPN)
Machine Operator and Assembler
Machinist
Maintenance and Repair Worker
Management Analyst
Material Moving Worker
Mechanical Engineer
Medical and Clinical Laboratory Technologist
Medical and Health Services Manager
Medical Assistant
Medical Record and Health Information Technician
Millwright
Multiple Machine Tool Setter, Operator, and Tender, Metal and Plastic
Network and Computer Systems Administrator
Nurse Practitioner
Nursing Assistant
Occupational Therapist
Pharmacist
Pharmacy Technician

Plumber, Pipefitter and Steamfitter
Police and Sheriff's Patrol Officer
Postsecondary Teacher
Precision Electrical and Electronic Equipment Assembler
Precision Metal Worker
Production Worker
Radiological Technologist
Registered Nurse (RN)Respiratory, Occupational
Physical Therapist
Sales Representative
Secretaries and Administrative Assistant
Security Guard
Semiconductor Processing Technician
Shipping, Receiving, and Traffic Clerk
Social Worker
Solar Photovoltaic Installers
Special Education School Teacher
Surgical Technologist
Team Assembler
Tool & Die Maker
Truck Driver, Heavy and Tractor-Trailer
Truck Driver, Light
Veterinarian
Welder, Cutter, Solderer, and Brazier



EMPLOYER BUSINESS SERVICES

Job Posting & Recruitment Events | Screening Services | Qualified Applicant Searches | WorkKeys Job Task Analysis & Assessments
On-the-Job Training Grants | Space to Conduct Interviews

**EMPLOYERS, DO YOU NEED TO HIRE A NEW EMPLOYEE?
BEFORE YOU DO, CONSIDER THE ON-THE-JOB WAGE REIMBURSEMENT PROGRAM!**



WHAT IS ON-THE-JOB TRAINING?

- OJT's offset extensive employer costs of onboarding and training new hires.
- OJT Training Grants provide up to 50% wage reimbursement for each eligible new hire during initial training.
- OJT's have minimal paperwork. We manage the process for you.
- OJT Programs help employers reduce employee turnover.

Employers, Are You Looking to Skill Up Your Workforce? Consider APPRENTICESHIPS.

APPRENTICESHIPUSA™

Benefits for the Apprentice:

- Earn higher wages and increase your earning potential.
- Receive relevant training.
- Gain experience.
- Increase skills and proficiencies.
- Access a pathway to college.
- Employer is invested in learning and training.
- Clear career paths and opportunities



Benefits for the Employer:

- 93% of apprentices retain employment after completing an apprenticeship program.
- Develop apprenticeship standards that meet training needs.
- Identify key roles and responsibilities for the apprenticeship.
- Determine the process of program operation, work processes, related technical instruction, and progressive wages!

Contact your local WorkOne office for more information!

JAG  **Indiana**
JOBS FOR AMERICA'S GRADUATES

Jobs for America's Graduates (JAG) Program is dedicated to helping students succeed in high school and beyond! JAG Indiana has assisted More than 20,000 Hoosier students graduate high school, pursue secondary education, and secure quality entry-level jobs leading to career opportunities. JAG students compete in regional, state, and national competitions and receive scholarships up to \$5,000. More than 6,000 students have participated in over 130 JAG Programs throughout Indiana.



Schools listed offer the JAG Program in Region 2.
Ask your counselor how you can join the JAG team.

St. Joseph County:

- Washington High School
- Riley High School
- Adams High School
- Purdue Polytechnic High School
- Laville High School
- Pennway Alternative

Elkhart County:

- Elkhart High School
- Goshen High School
- Jimtown High School
- Goshen Alternative

Marshall County:

- Culver High School Specialist

Kosciusko County:

- Tippecanoe High School
- Warsaw High School
- Whitko High School
- Wawasee High School
- Gateway

Fulton County:

- Rochester High School

College Programs:

- Ivy Tech CSP

For more information about Region 2 JAG Programs,
reach out to:

Madison Sims

In School Youth (JAG) Support Manager
madison.sims@gotoworkone.com

WORKFORCE READY GRANT



The Workforce Ready Grant pays for all tuition and regularly assessed fees for qualifying high-value certificates at any eligible training provider. To qualify, recipients must:

- Be an Indiana resident and a U.S. Citizen (or eligible non-citizen)
- Have a high school diploma (or equivalent) but less than a college degree
- Be eligible for state financial aid and file the FAFSA (for certain programs and providers)
- Enroll in a qualifying program at an approved training provider
- Meet any additional requirements for certain training providers and programs

**More than 31,000 Hoosiers
have been trained for a better
job through the
Workforce Ready Grant.**



**Workforce Ready Grant
recipients earn nearly \$7,000
more after getting a certificate.**

For more information on the
Workforce Ready Grant in Region 2,
Contact your local WorkOne office!



Need help Finding a Job?

Scan Me for more Info



Are you between the ages of 18-64?

Are you wondering how work will affect your Social Security disability benefits?



Contact Me!
LAURA NAVARRO

(574) 850-2994

lnavarro@gotoworkone.com



Northern Indiana Workforce Boards'



The WorkOne System is an equal opportunity employer and does not discriminate in the programs and services offered.

Auxiliary aides and services are available upon request to individuals with disabilities.

Call 800-743-3333 for TDD/TYY relay services.



HIRE Program is a nationally recognized program that helps ex-offenders assimilate into society and improve their lives through sustainable employment.



The Challenge



11,000+

Number of inmates released annually in Indiana



33.87%

Recidivism rate for Indiana



85%

Unemployed at the time of arrest

Job Readiness Skills Training & Assistance



Resume Development



Interviewing and Job Application Assistance



Employment Assessments



Financial Literacy and Budgeting



Computer / Digital Literacy

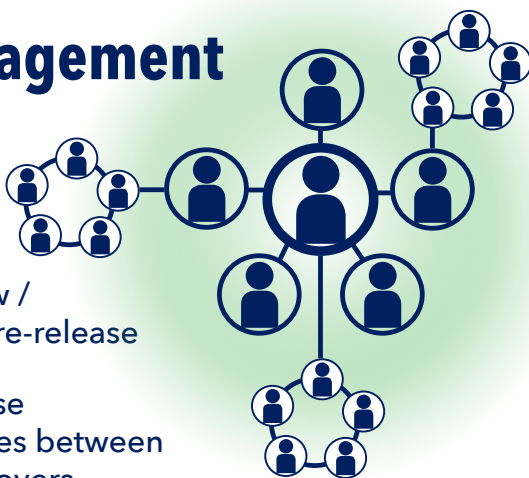


Employability Skills and Workplace Conflict Resolution

Employer Assistance with Federal Bonding and Work Opportunity Tax Credit (WOTC)

Employer Engagement

- Virtual job fairs
- Facility tours
- Opportunity to review / identify candidates pre-release
- Coordinate pre-release interview opportunities between candidates and employers
- IDOC employer days
- Document success stories / testimonials



IDOC HIRE Model



www.linkedin.com/company/hire-indiana



www.in.gov/idoc/3585.htm

VETERAN SERVICES



MEET WORKONE REGION 2'S LOCAL VETERAN
EMPLOYMENT REPRESENTATIVE: ERNESTO (ERNIE)
RIVAS



1 Who can qualify for Veteran services at WorkOne?

Eligible Veterans, Eligible Persons, and Eligible Spouses.

Eligible Veterans: Are identified as anyone who served on active duty 180 days and was discharged with other than a dishonorable discharge or was released from active duty because of a service-connected disability.

For RESERVE component under an order to active duty pursuant to 10 U.S.C. §§ 12301 (a), (d) or (g); 12302; or 12304 Who served on active duty during period a period of war or in campaign or expedition for which a campaign badge is authorized and was discharged or released from such duty with other than dishonorable discharge or release due to sole survivorship discharge are priority of service.

Eligible Spouse: Include widows and widowers are established as priority of service must met requirements as explained in Title 38 U.S.C. 101[2][38 U.S.C. 101[2]]; Chapters 41 and 42.

Eligible Persons: Are the spouse of any member of the armed forces serving on active duty or who were; missing in action, captured in the line of duty by a hostile force or forcibly detained or interned in line of duty by a foreign government or power. The spouse of any person who has total and permanent disability permanent in nature resulting from a service-connected disability, or the spouse of a veteran who died while a disability so evaluated was in existence are not priority of service.



2

What WorkOne services are available to qualified Veterans?

We exist to get people jobs as quickly as possible at the highest possible wage.

- Veterans can benefit from LVER's business development
- Current job openings in the area
- Networking possibilities
- Work with partners that assist with resume development
- Work with partners that offer training and development

3

What does 'Priority of Service' mean at WorkOne?

Priority of Service: Is assisting qualified veterans and spouses to be assisted in the fastest way possible. Whether for job hunting or training.

Regulations and TEGL 10-09 differs from the definition of veteran that applies to reporting of Wagner-Peyser services and to eligibility to receive services from a Disabled Veterans' Outreach Program [DVOP] specialist or a Local Veterans' Employment Representative [LVER] staff member. The veteran definition that requires the individual to have over 180 days of active service still applies to Wagner-Peyser reporting and to eligibility for DVOP and LVER services but does not apply to priority of service in DOL-funded employment and training programs. Eligible veterans, and eligible spouses have priority of service. They receive priority on training and education.



SCAN QR CODE FOR MORE INFORMATION!

JOB SEEKERS

FOLLOW THE PATH

TO A BETTER LIFE

WHAT IS NEXT LEVEL JOBS?

Next Level Jobs provides free training for Indiana's highest-demand jobs. Enroll now to be on your way to a better-paying career.

STEP 1

VISIT NEXTLEVELJOBS.ORG

Select **Next Level Job Seeker** and complete a short survey.

STEP 3

EARN YOUR FREE CERTIFICATE

Complete your training close to home.

STEP 2

CONNECT WITH A TRAINING PROVIDER

Receive an email with next steps.

STEP 4

GET A BETTER JOB

Connect with employers in your area.



ADVANCED
MANUFACTURING



BUILDING &
CONSTRUCTION



HEALTH &
LIFE SCIENCES



IT & BUSINESS
SERVICES



TRANSPORTATION
& LOGISTICS

ENROLL NOW AT
NEXTLEVELJOBS.ORG



Vocational Rehabilitation

Vocational Rehabilitation helps individuals with disabilities achieve employment. Vocational Rehabilitation services are offered locally in 25 Area Offices throughout Indiana and Vocational Rehabilitation Counselors provide services in each county. Eligibility for Vocational Rehabilitation is not based on income or financial resources. If you have a disability that is posing as a barrier for you to obtain, maintain or advance in employment..

**Vocational Rehabilitation can
assist with the following:**

- Exploring your employment interests and skills
- Helping you find your first job
- Providing assistive technology and other resources to help you keep your job
- Re-entering employment after a period of not working
- Training for a new career due to factors related to your disability
- Providing services for career advancement



**To Learn More
Scan QR Code**



WorkOne

Northern Indiana

americanjobcenter
INDIANA

HOW TO BE A BETTER JOB SEEKER

ASK A STAFF PERSON TO REGISTER FOR A WORKSHOP



TUESDAYS

*Using ICC
Workshops*
10:00 AM

South Bend and
Elkhart offices

Discover how to
navigate and
apply to our job
board on Indiana
Career Connect
(ICC).



THURSDAYS

*Job Search
Techniques
Workshops*
1:00PM

South Bend and
Elkhart offices

Learn how to find
job openings you
want, apply to those
jobs, and get that
interview.

The WorkOne System is an equal opportunity employer and does not discriminate in the programs and services offered. Auxiliary aides and services are available upon request to individuals with disabilities. Call 800-743-3333 for TDD/TYY relay services.

WorkOne Northern Indiana Office Locations

WorkOne Northern Region 2 Office hours are:

Monday-Thursday: 8:00AM-4:30PM

Friday: 10:30AM-4:30PM

Southern Region 2 Office Hours are listed below!



Northern WorkOne Region 2 Offices

Elkhart WorkOne (Elkhart County)

430 Waterfall Dr. Elkhart, IN 46516

Phone: (574) 295-0105

South Bend WorkOne (St. Joseph County)

220 W Colfax Ave STE 200 South Bend, IN 46601

Phone: (574) 237-9675

Southern WorkOne Region 2 Offices

Plymouth WorkOne (Marshall County)

510 W Adams St.

Plymouth, IN 46563

(574) 936-8919

Open 8:00AM-4:30PM Mondays & Thursdays

Warsaw WorkOne (Kosciusko County)

3113 E. Center St.

Warsaw, IN 46580

(574) 269-3050

Open 8:00AM-4:30PM Thursdays & 10:30AM-4:30PM Fridays

Rochester WorkOne (Fulton County)

911 Main St.

Rochester, IN 46975

(574) 223-8542

Open 8:00AM-4:30PM Tuesdays & Wednesdays

**March-April 2025 Closings:
April 18th- Good Friday**



**NORTHERN
INDIANA
WORKFORCE
BOARD, INC**

WorkOne
Northern Indiana
americanjobcenter

An initiative of the Northern Indiana Region 2 Workforce Board. Funding for this project has been provided by Indiana Department of Workforce Development. The WorkOne System is an equal opportunity employer and does not discriminate in the programs and services offered. Auxiliary aids and services are available upon request to individuals with disabilities. The TDD/TTY number is 1-800-743-3333. El Programa de Financiamiento asistido de acuerdo con el Título 1 de WIA es un programa de Igualdad de Oportunidades de Empleo. Ayuda y servicios auxiliares están disponibles a solicitud para personas con discapacidad. El número de TDD/TTY es 1-800-743-3333.

Oversight provided by Region 2 Workforce Board